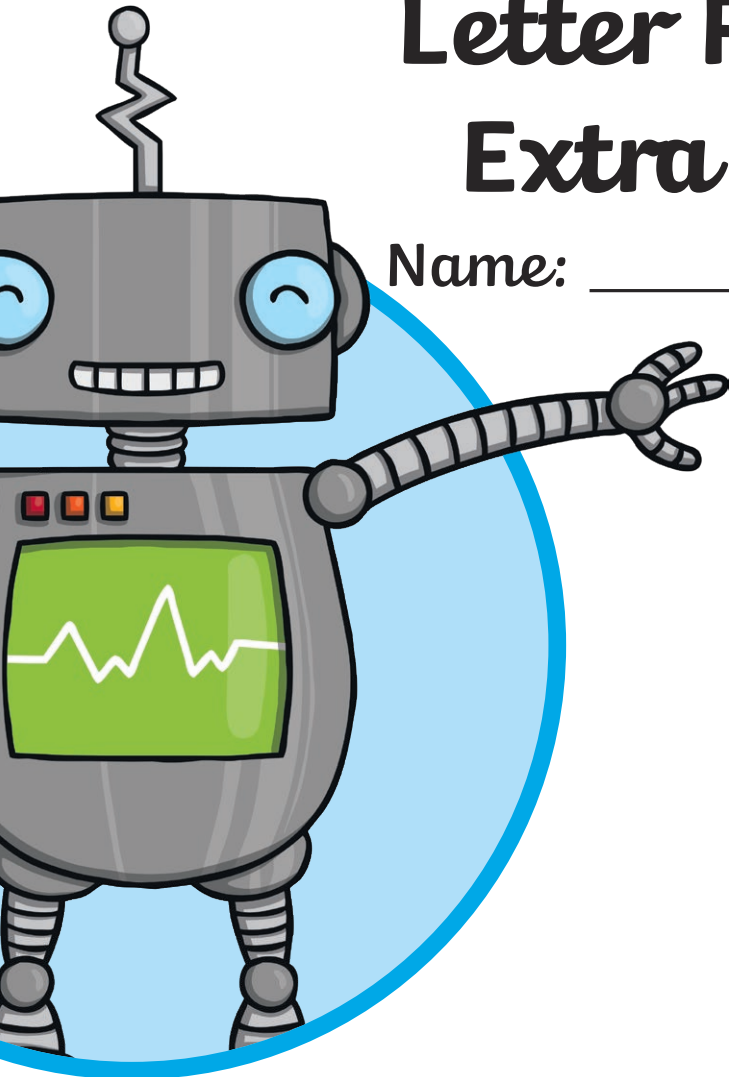


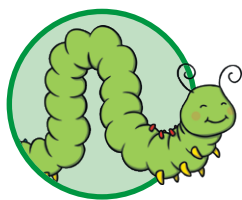
KS2

Continuous Cursive

Letter Formation Extra Practice

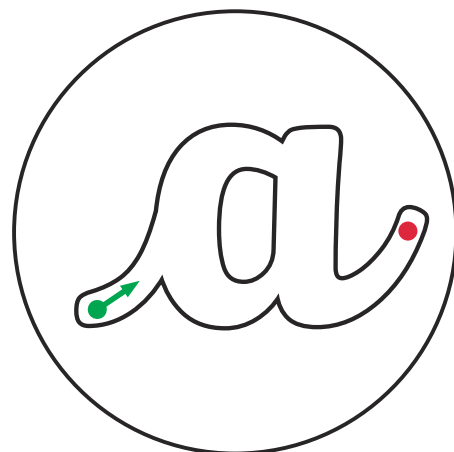
Name: _____





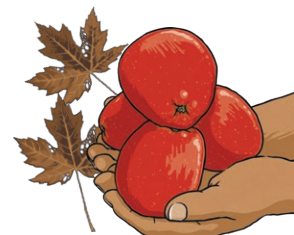
The Letter 'a'

Whoosh in and round you go. Up and down and kick out **a**'s toe.



Can you add an 'a' to these words to complete the words and phrases?

 utumn pples



 ching e r

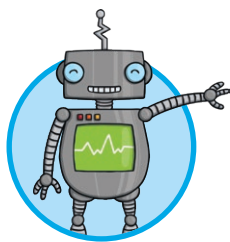


 yog te cher



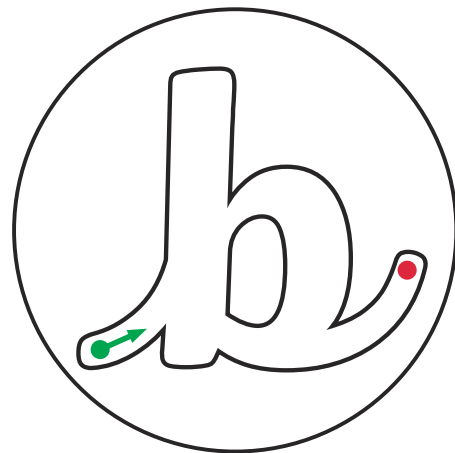
a

a



The Letter 'b'

Whoosh in an up tall and back down. Then halfway up and all the way round. Add a lead at the end so **b** can join on to a friend!



Can you add a 'b' to these words to complete the words and phrases?

um le ee



right ut

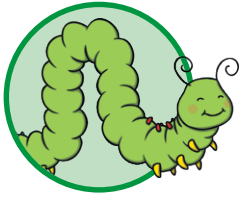


ouncing ra it



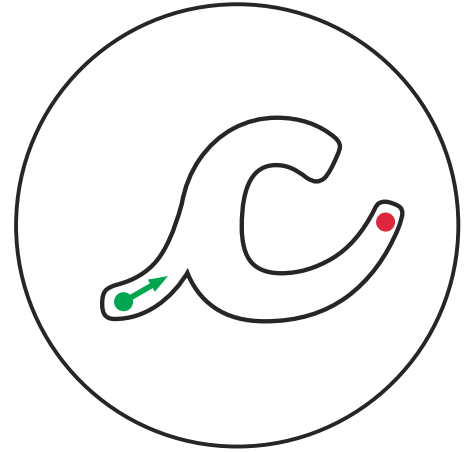
b

b



The Letter 'c'

Whoosh in and curl the *c*.
C joins other letters easily.



Can you add a 'c' to these words to complete the words and phrases?

 ute ats



 run hy ornflakes

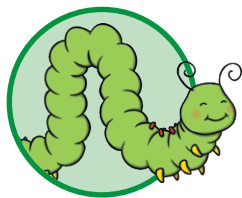


 hampion limber



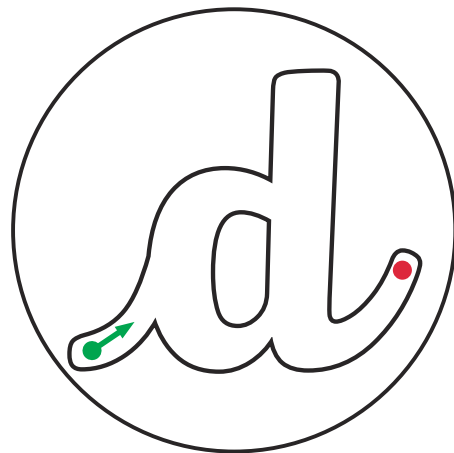
c

c



The Letter 'd'

Whoosh up halfway and go round, then all the way up and down. Kick out **d**'s toe and she's ready to go!



Can you add a 'd' to these words to complete the words and phrases?

 isco og



 ream hoti ay

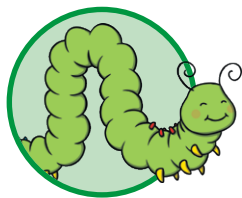


 ve ing ay



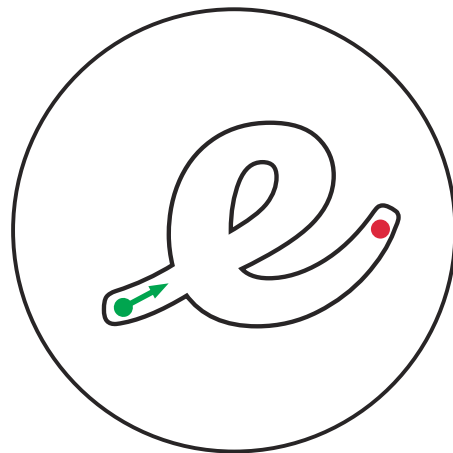
d

d



The Letter 'e'

Whoosh in and curl like a snail and leave an easy joining tail.



Can you add an 'e' to these words to complete the words and phrases?

 ight ggs



 arly v ning

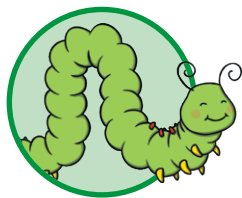


f ris wh l



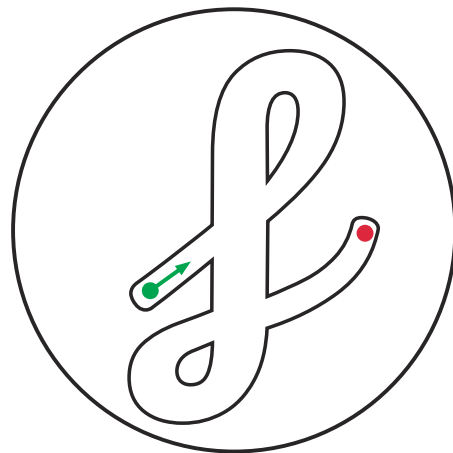
e

e



The Letter 'f'

Whoosh in to the top and go round and then zoom under the ground. Under the line, loop the last part and finish your **f** near its start!



Can you add an 'f' to these words to complete the words and phrases? What sound does the 'f' make in each word?

 tu **y** **eathers**



 ierce **lood**

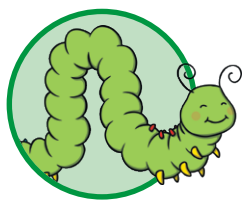


 colour **ul** **pu** **in**



f

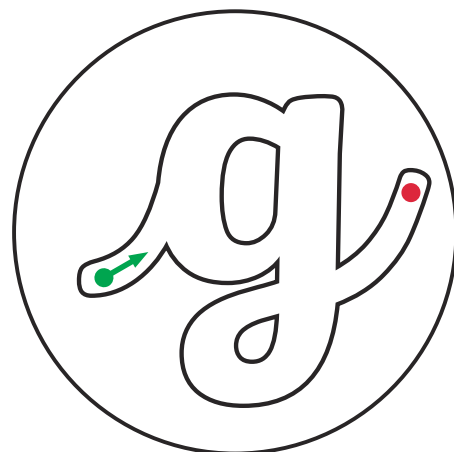
f



The Letter 'g'

Whoosh in, go round to the top.

Go down under the line,
loop and stop.

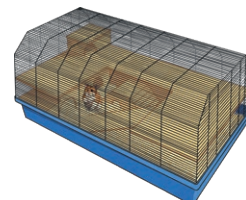


Can you add a 'g' to these words to complete the words and phrases?

 rizzly iant



 erbit's ca e

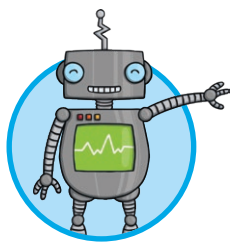


ju tin enius



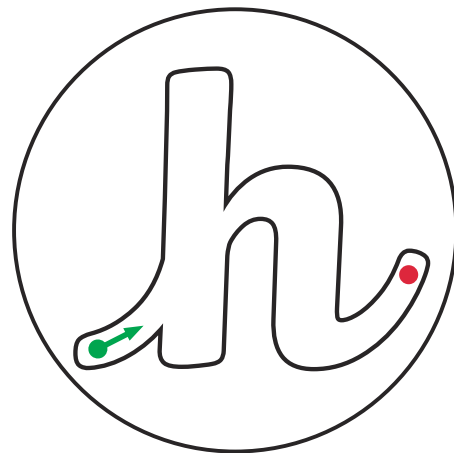
g

g



The Letter 'h'

Whoosh in and up tall and then down. Halfway up, bend over and flick off the ground.



Can you add an 'h' to these words to complete the words and phrases?

s _ arp _ edge _ og



t ick bus _ es



_ elpful teac _ er



h

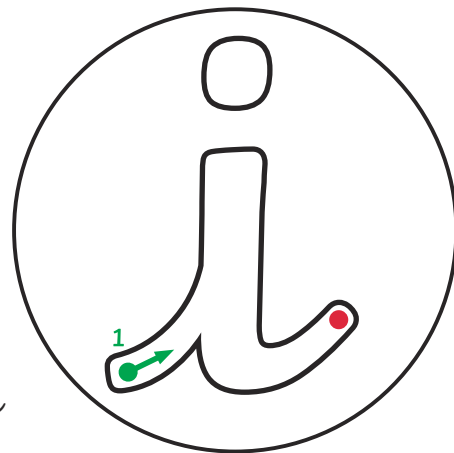
h



The Letter 'i'

Whoosh up and down,
then kick out a toe.

Add a dot and your **i** is ready to go!



Can you add an 'i' to these words to complete the words and phrases?

 cy gloo



 ttle k tten



 s x sa l ng sh ps



i

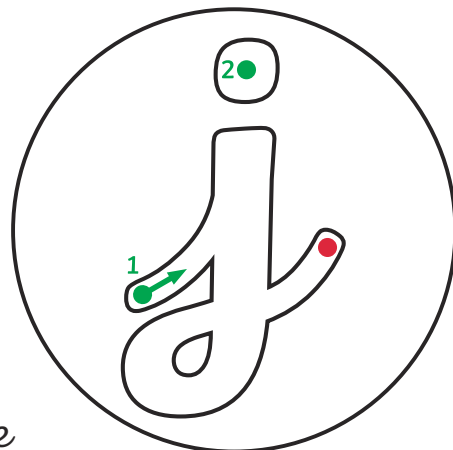
i



The Letter 'j'

Whoosh up then zoom down under the line.

Loop the tail then add your dot at the right time.



Can you add a 'j' to these words to complete the words and phrases?

agged ewel



in ured ma or

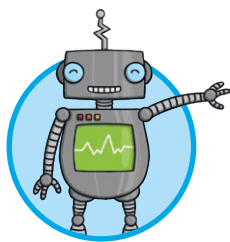


en oying uggling



j

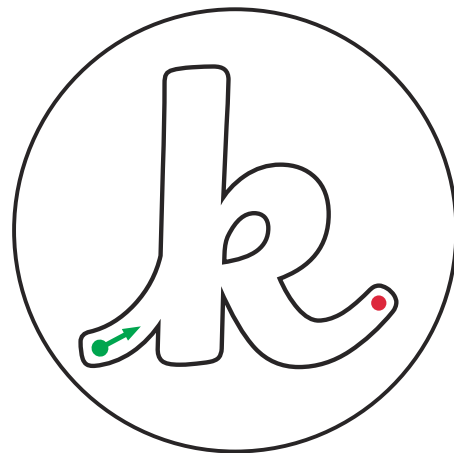
j



The Letter 'k'

Whoosh up tall and back down,
go halfway up and around.

Go down and out with a flick,
your **k** is ready to kick!

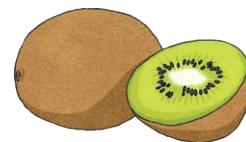


Can you add a 'k' to these words to complete the words and phrases?

ic ing angaroo



spi y iwi



spoo y pump in



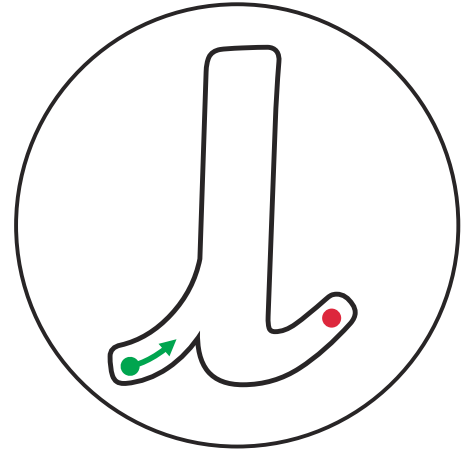
k

k



The Letter 'l'

Whoosh in and up tall. Down to the ground and make your flick small.



Can you add an 'l' to these words to complete these words and phrases?

 ong adder



 emon y

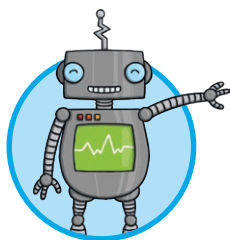


 ove y je y



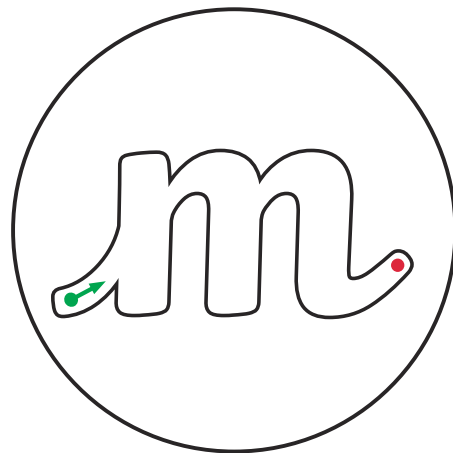
l

l



The Letter 'm'

Whoosh in and then down.
 Up, over and back to the ground.
 Up, over and down again.
 Add a flick to finish your **m**.



Can you add an 'm' to these words to complete the words and phrases?

 ythical onster



 agical er aid

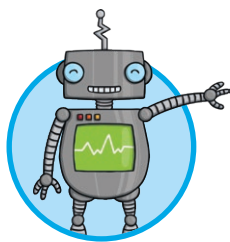


 oo ing tru pet



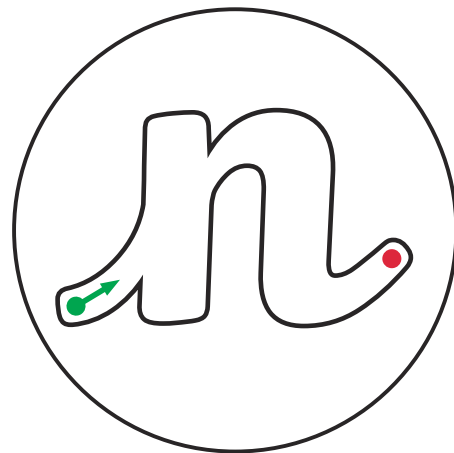
m

m



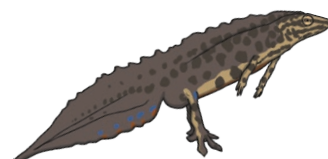
The Letter 'n'

Whoosh in and the down.
Up, over the hump and
flick off the ground.



Can you add an 'n' to these words to complete the words and phrases?

imble ewt



aughty g_ome

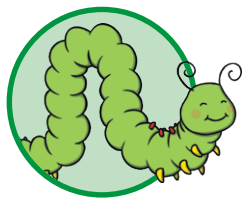


a cie t ovel



n

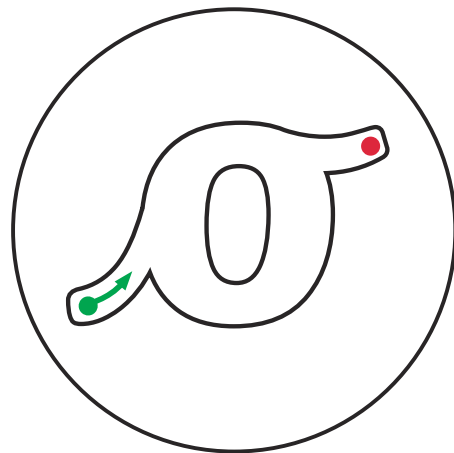
n



The Letter 'o'

Whoosh in round you go.

Lead out from the top for your o.



Can you add an 'o' to these words to complete the words and phrases?

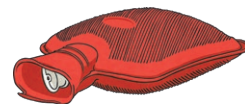
live it



ld cl ck

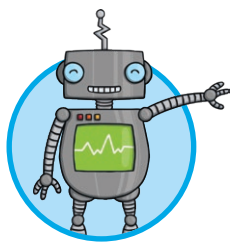


h t water b ttle



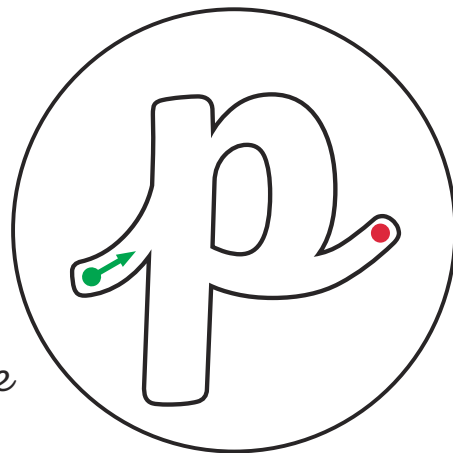
o

o



The Letter 'p'

Whoosh in and then go down low.
Back up to the top and round you go.
Lead out at the end so that **p** can join onto a friend.



Can you add a 'p' to these words to complete the words and phrases?

 rowing anther



 lum a le

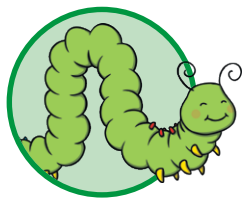


 ivate ro erty



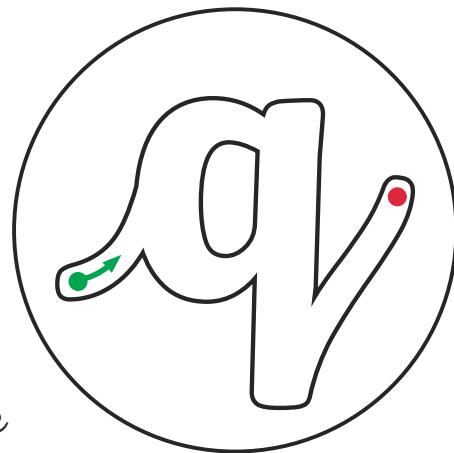
p

p



The Letter 'q'

Whoosh in and round you go, then zoom under the line and kick out **q**'s big toe!

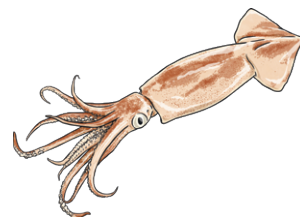


Can you add a 'q' to these words to complete the words and phrases?

 uality uadbike



 s wiggly s uid

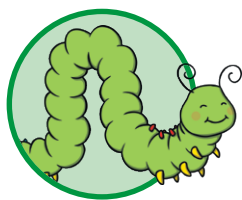


 uni ue ueen



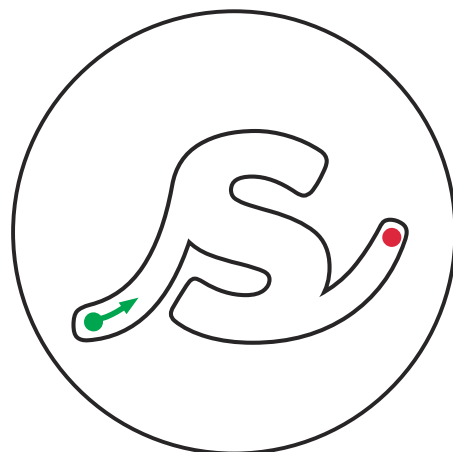
q

q



The Letter 's'

Whoosh in and curl left. Curl right then lead out of your *s*.



Can you add an 's' to these words to complete the words and phrases?

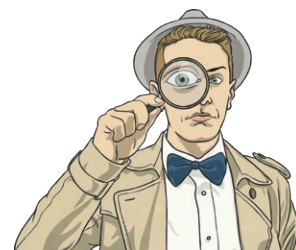
weet trawberrie



izzling au age



py gla



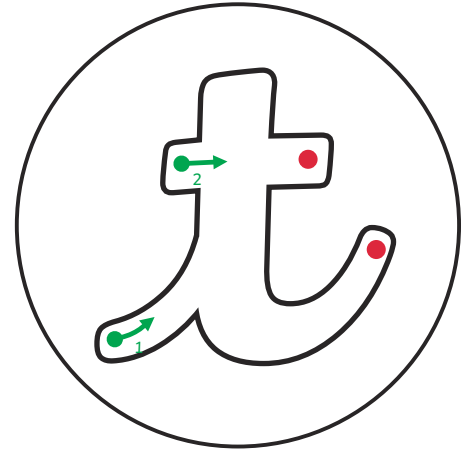
s

s



The Letter 't'

Whoosh to the top and back down, then add a flick off of the ground, you need to cross the **t**, with a straight line on his tummy.



Can you add a 't' to these words to complete the words and phrases?

iny errier



li er collec ing



floa ing ur le



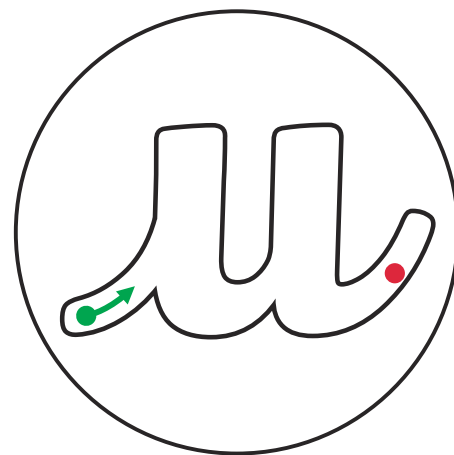
t

t



The Letter 'u'

Whoosh up then down. Bend round, go up and down to the ground. Kick out a toe and **u** is ready to go!



Can you add a 'u' to these words to complete the words and phrases?

j _ mp _ p



_ nder the _ mbrella



_ n _ s _ al _ nicorn



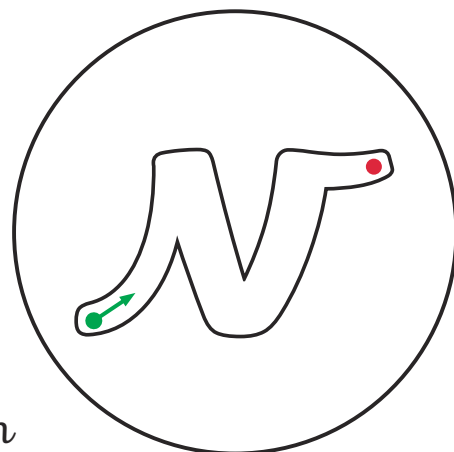
u

u



The Letter 'v'

Whoosh up then down into the valley.
Zoom back up and across the top to finish your v.

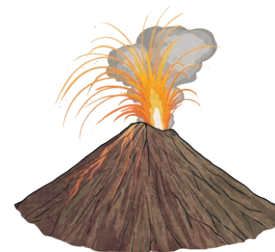


Can you add a 'v' to these words to complete the words and phrases? What sound does the 'v' make in each word?

 icious ultures



 acti e olcano



 li ely festi al



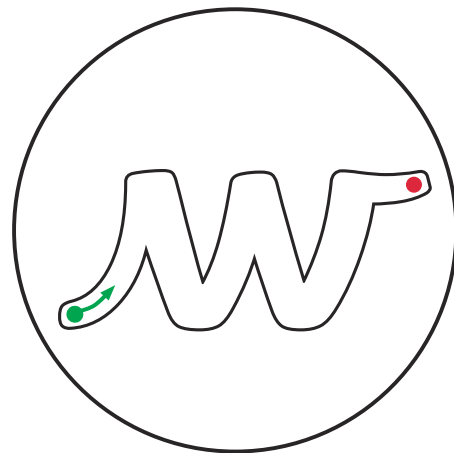
v

v



The Letter 'w'

Whoosh in, then down and back up. Down again, up and across at the top.



Can you add a 'w' to these words to complete the words and phrases? What sound does the 'w' make in each word?

 rinkly itches



 o ling of



 s arm of asps



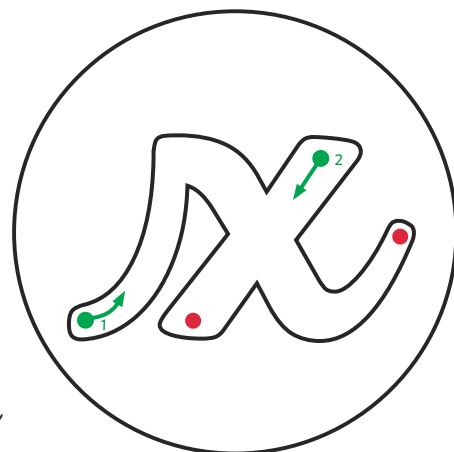
w

w



The Letter 'x'

Climb up to the top and then slide down from left to right and have a rest. Jump back up to the top, go from right to left, and you have an **x**!



Can you add an 'x' to these words to complete the words and phrases? What sound does the 'x' make in each word?

si _ fo _ es



itchy chickenpo _



an _ ious e _ tra-terrestrial



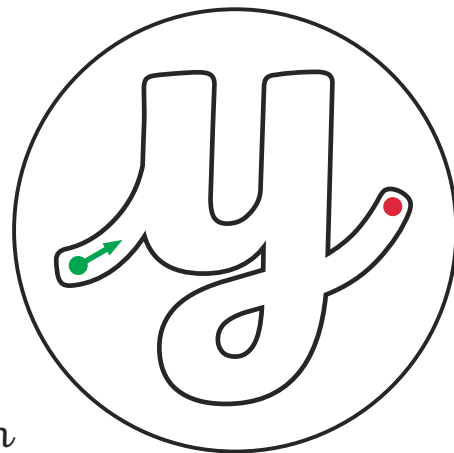
x

x



The Letter 'y'

Whoosh up then down and bend round.
 Go up then down underground.
 Loop the tail under the line.
 Lead the y out and it's looking fine.



Can you add a **y** to these words to complete the words and phrases? What sound does the **y** make in each word?

 ellow otk



fl ing g mnast



m thical stor



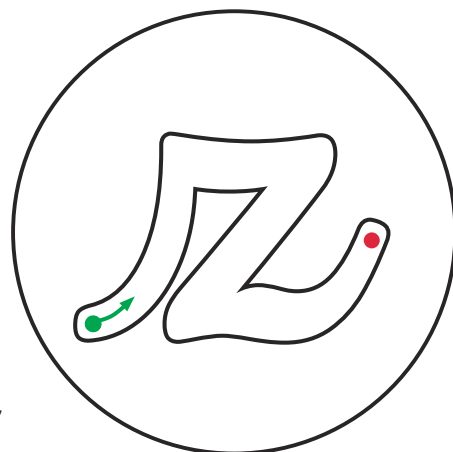
y

y



The Letter 'z'

Whoosh up then to the right.
Zigzag down and back to the right!



Can you add a 'z' to these words to complete the words and phrases? What sound does the 'z' make in each word?

 ebra at the oo



 ig ag



yummy pi a



z

z